

WARRANTY TERMS & CONDITIONS

Hotwire Towel Rails carry the following warranty,
Heated 304 Grade Stainless Steel: 5 years
Heated 201 Grade Stainless Steel: 2 years
Unheated or Standard Rails: 2 years

The warranty is subject to the following conditions.

1. The Heated Towel Rails must be installed by a licensed A Class Electrician. The Electricians contact details must accompany this form. No warranty claim will be honoured if the Electricians details are not supplied.
2. Proof of purchase must be supplied. No warranty claim will be honoured if the Proof of Purchase is not supplied.

Exclusions:

The Warranty will be null and void if:

1. The installation is not carried out strictly to the installation instructions.
2. Damage is caused by others during construction, renovation, etc.
3. Damage is caused by unauthorised modification.
4. Damage is caused by accident, power surge, neglect, misuse, lightning strike or act of God.

In addition to the above exclusions, any damage, which arises from the builders, or electricians failing to comply with our instructions, is also not included in our Warranty.

All Warranty claims must be made directly to us and we will provide service during our normal hours of business.

The Guarantee is against all defects in manufacture, material and workmanship. We may at our discretion replace or repair the rail. We are not liable for any costs pertaining to removal of the rail. Our total liability may be at our discretion limited to refunding the purchase price of the product.

This warranty is offered in addition to any relevant Statutory Federal or State Warranty.

This warranty is in addition to your legal rights.

Procedure:

Simply return your Hotwire Heated Towel Rail to your place of purchase along with this form and your proof of purchase.

The product will in turn be returned to us. The warranty claim will be assessed and if honoured the unit will be completely replaced.

Warranty Claim Form - (or register on line)

Customer Name	
Address	
Suburb	
State	Postcode
Phone	
Mobile	
Date of Purchase	
Place of Purchase	

Installation Details

Date of Installation (if known)
Name of Installing Electrician
Contact Number
Description of Fault
.....
.....
.....

HOTWIRE

TOWEL RAILS

Australia

Hotwire Heating
Po Box 543, Mount Evelyn Vic 3796

hotwireheating.com.au

PH: 1300 797 060

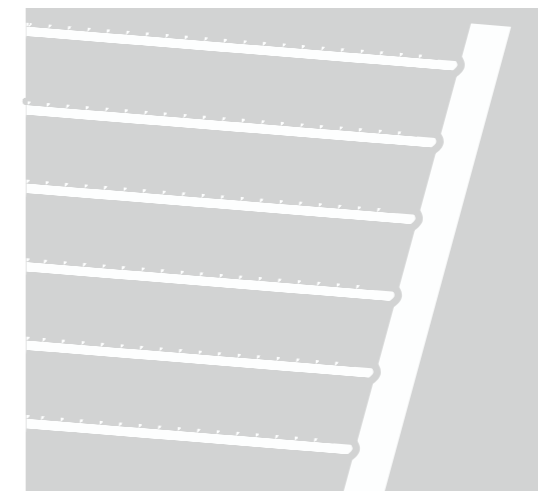
HOTWIRE

TOWEL RAILS

“Easy Fix”

Stainless Steel Towel Rail

Installation Manual



- Cut your installation time by 70%
- Move horizontally making it ‘easy to find and fix’ to studs, and or, drilling between tiled grout lines
 - Long term fixing security
 - Looks aesthetically stronger

Hotwire Easy Fix Towel Rail Installation Manual

Easy Fix:

Congratulations on the purchase of your Easy Fix Hotwire Towel Rail.

Guarantee:

This Easy Fix HTR warranty protects against defects due to faulty workmanship or materials from the date of purchase. In the event of a defect in the product, it should be returned with the sales receipt to the retailer from whom it was purchased. Under the guarantee the defective product will be repaired or replaced at the Suppliers option, excluding costs of disconnection, reconnection, and freight that are the responsibility of the owner.

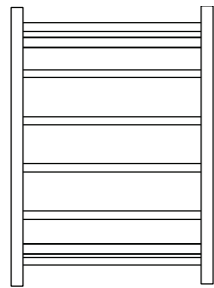
This guarantee does not cover any damage to the product caused by misuse, neglect, accident, nor in violation of the Manufacturer's instructions, or any damage, loss or injury arising as a consequence of the use of the product.

Installation:

Applicable for all ladder models.

Contents:

1 x Ladder Towel Rail Frame



1 x Top mounting bracket/legs & bracket cover with fixing screws.



1 x Bottom mounting back bracket/legs & bracket with fixing screws.



4xbracket wall M5 x 50mm fixing screws

Product Inspection:

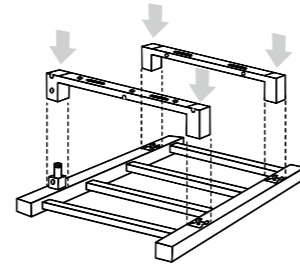
Prior to installation please ensure the product is to your satisfaction. Once installed the Supplier cannot be responsible for defects in the product finish. This product is not intended for use by young children or infirmed persons without supervision. Young children should be supervised to ensure they do not play with the product. To minimize a hazard for young children, this appliance should be installed so that the bottom rail is 600mm above the floor.

Installation:

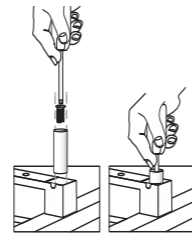
We recommend the towel rail be installed vertically on a flat and uniform wall, and where possible into studs or other suitable anchor material. If fixing to hollow cavity walls, toggle anchors (not those supplied) or similar devices must be used.

Preparation:

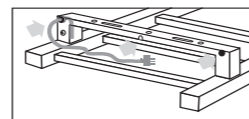
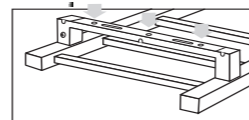
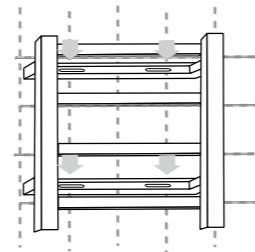
1. Lay the HTR parts out.
2. Snap into position the top and lower brackets/legs to the clips of the frame.



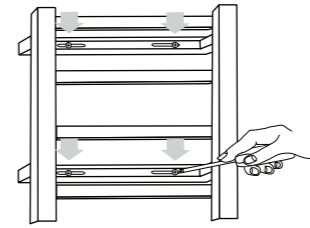
3. Select the 4 M50 x 50mm screws. Place the frame face first on a non scratch surface with the back brackets facing upward. Position the screws through the leg holes tighten to the frame.



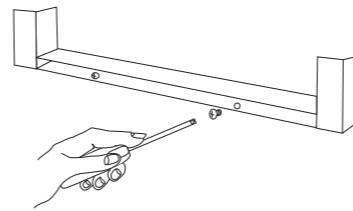
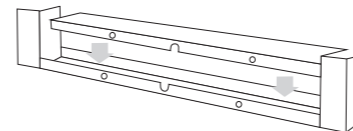
4. Place the Towel Rail on the wall in the desired position and mark your drill hole positions. (Note the rail can move horizontally making it 'Easy to find and fix' to the studs and or drilling between tiles grout lines)



5. Pre-drill two wall fixing holes for both lower and top brackets and then screw the HTR securely to the wall.



6. Place back brackets covers over back bracket and screw tight from underneath.



Australia

Hotwire Heating

www.hotwireheating.com.au